

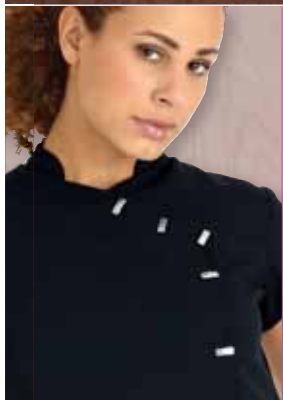
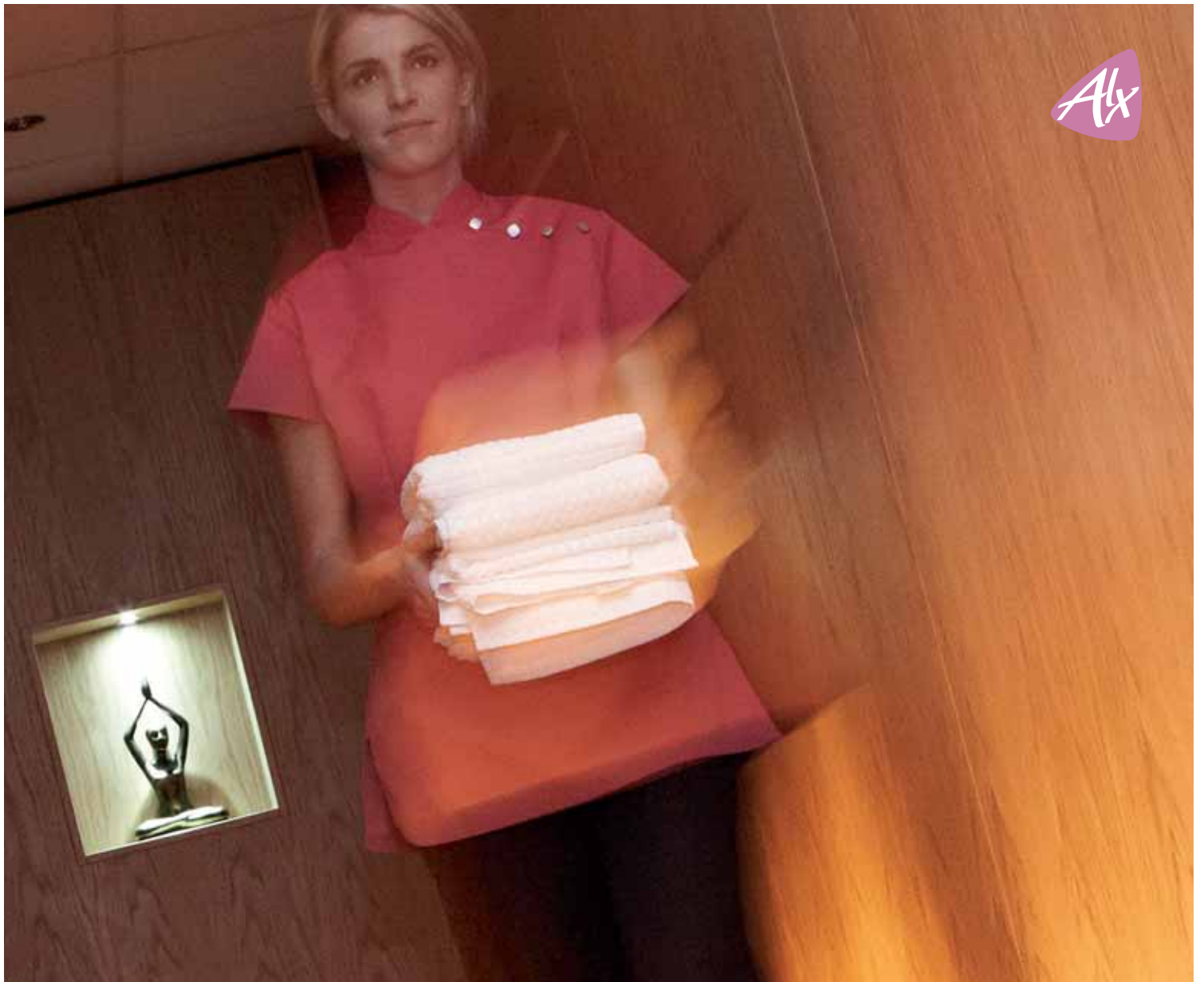
Beauty and Spa

Elegance and simplicity

We're continuing to keep our beauty and spa range right up to the minute.

Our designers have echoed contemporary trends with fresh colours, metallic button finish and new trouser shapes. All our striking colours and styles feature top quality, non-fade easycare fabrics.





Our new
easycare beauty
tunic and trousers
are both durable
and lightweight.



Tunics / Trousers **186 – 193**

Put a spring in your step
with bright new clogs.



Order online at www.alexandra.co.uk call 0845 155 2288 or fax 0845 155 2211

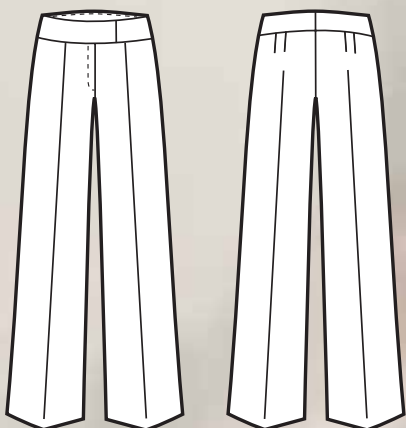
Tunics and trousers

Easycare spa wear

NF990
Black

New

NF991



Wide Leg Trouser

NF991U

- 200gsm 100% Polyester
- Contemporary cut
- Flat front
- Zip front with button fastening
- Free Wonderweb pack
- 40° wash
- Inside leg: 86cm (34ins) unhemmed
- Sizes: 8 - 26

Colours: Black / Navy

NF991
Black



Fast emblem
service available



Both elegant and stylish, our latest beauty tunics and trousers are produced using a soft-to-touch 100% polyester for **great comfort** next to the skin and fantastic easycare properties. The fabric used features a two-way stretch for ease of movement and reliable crease recovery. **Great value!**

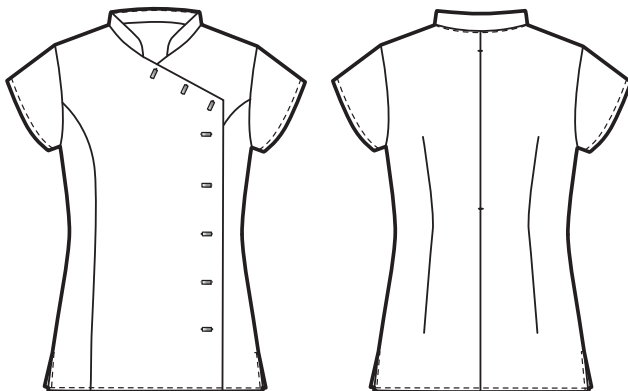
NF990
Black



NF990
Navy



NF990



Asymmetrical Wrap Tunic

NF990

- 200gsm 100% Polyester
- Mandarin style collar
- Asymmetrical wrap over front neckline
- Front button fastening
- Two concealed hip pockets
- Cap sleeves
- Single action back
- Side vents
- 40° wash
- Length: graded by size
- Sizes: 8 - 26

Colours: Black / Navy

Order online at www.alexandra.co.uk call 0845 155 2288 or fax 0845 155 2211

Tunics and trousers

Stand Collar Beauty Tunic

NF977

- 195gsm 67% Polyester/33% Cotton
- White piping detail
- Back zip fastening
- Side vents
- Cap sleeves
- 60° wash
- Length: graded by size
- Sizes: 80 - 136cm (31 1/2 - 53 1/2ins)



Black

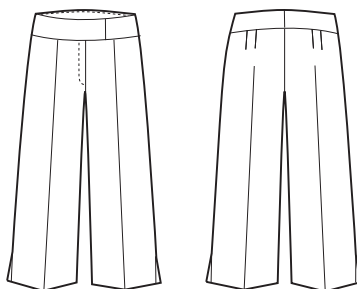
Cropped Trouser

NF976

- 195gsm 67% Polyester/33% Cotton
- Contemporary cut
- 3/4 cropped wide leg shape
- Flat front
- Zip front with hook & eye fastening
- Side vents
- 60° wash
- Inside leg: 61cm (24ins) hemmed
- Sizes: 8 - 26



Black



White

NF977

Black



NF976

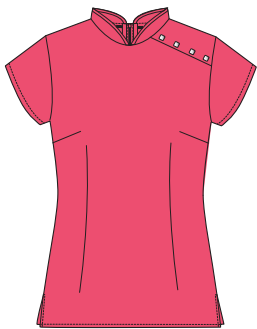
Black



Fast emblem
service available

Stand Collar Beauty Tunic
NF959

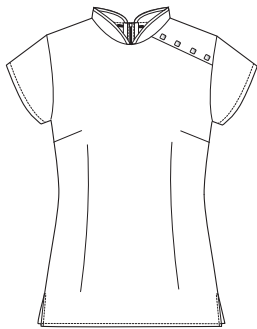
- 195gsm 67% Polyester/33% Cotton
- Asymmetric mock fastening detail
- Back zip fastening
- Side vents
- Cap sleeves
- 60° wash
- Length: graded by size
- Sizes: 80 - 136cm (31 1/2 - 53 1/2ins)



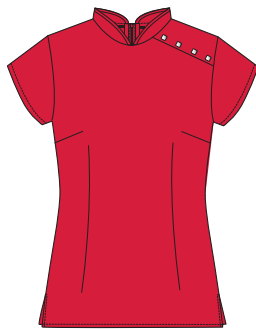
Bright Pink



Black



White



Red



NF959
Bright Pink

For bootleg trousers
see page 191

Order sizes for beauty tunics NF977 NF959

Bust	cm	80	84	88	92	96	100	104	108	112	120	128	136
	ins	31 1/2	33	34 1/2	36	38	39 1/2	41	42 1/2	44	47 1/2	50 1/2	53 1/2

Order online at www.alexandra.co.uk call 0845 155 2288 or fax 0845 155 2211

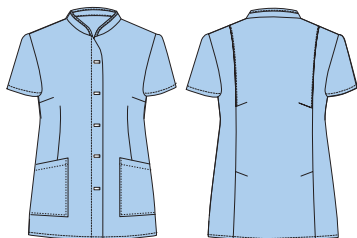
Tunics and trousers

Stand Collar Beauty Tunic NF969

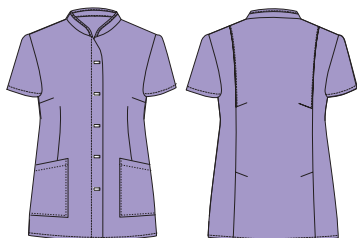
- 195gsm 67% Polyester/33% Cotton
- Concealed zip front
- Mock fastening detail
- Two hip pockets
- Double action back & vents
- Cap sleeves
- 60° wash
- Length: graded by size
- Sizes: 80 - 136cm (31 1/2 - 53 1/2ins)



Navy



Pale Blue



Lilac

For navy bootleg trousers NF981
see page 162

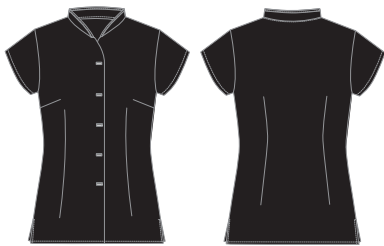


Fast emblem
service available

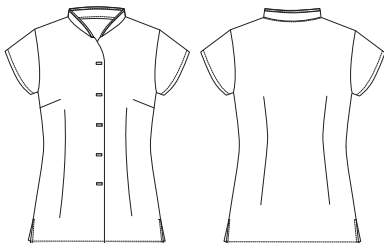


Stand Collar Beauty Tunic
NF172

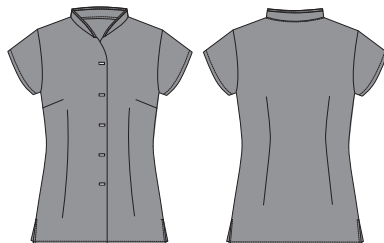
- 195gsm 67% Polyester/33% Cotton
- Centre front fastening
- Side vents
- Cap sleeves
- 60° wash
- Length: graded by size
- Sizes: 80 - 136cm (31 1/2 - 53 1/2ins)



Black



White



Grey

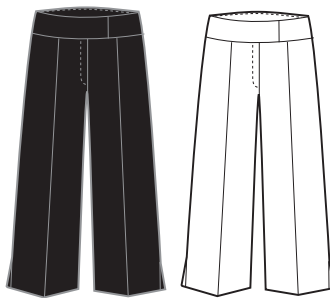
NF172
Black



NF172
White

Cropped Trouser
NF976

- 195gsm 67% Polyester/33% Cotton
- Contemporary cut
- 3/4 cropped wide leg shape
- Flat front
- Zip front with hook & eye fastening
- Side vents
- 60° wash
- Inside leg: 61cm (24ins) hemmed
- Sizes: 8 - 26

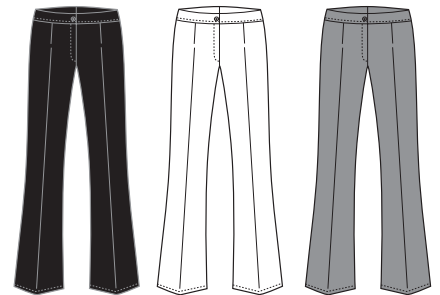


Black

White

Bootleg Trouser
NF965U

- 195gsm 67% Polyester/33% Cotton
- Contemporary cut
- Flat front
- Zip front with button fastening
- Free Wonderweb pack
- 60° wash
- Inside leg: 86cm (34ins) unhemmed
- Sizes: 8 - 26



Black

White

Grey

For more trousers
see pages 162 - 165

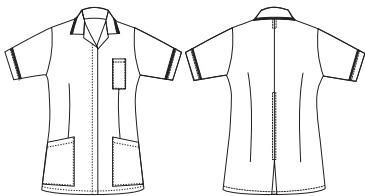
Order online at www.alexandra.co.uk call 0845 155 2288 or fax 0845 155 2211

Tunics and trousers

Classic Beauty Tunic

NF960

- 210gsm 65% Polyester/35% Cotton
- Concealed stud front
- Contrast piped collar & sleeves
- Two hip pockets & left breast pen pocket
- Single action back & rear pleat
- 60° wash
- Length: graded by size
- Sizes: 80 - 136cm (31 1/2 - 53 1/2ins)



White piped black



Black piped white



For tabards
see pages 112 - 119



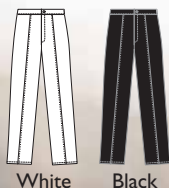
NF960

White piped
black

W40
Black

Trouser without Pockets W40

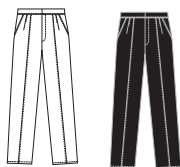
- 245gsm - White, 210gsm - Black
- 67% Polyester/33% Cotton
- Zip fly with hook & bar
- Flat front
- Elasticated back
- Sewn-in creases
- Industrially launderable
- Inside leg: 82cm (32ins) hemmed
- Sizes: 8 - 28



White Black

Trouser with Pockets W640

- 210gsm 67% Polyester/33% Cotton
- Zip fly with hook & bar
- Pleat front
- Two hip pockets
- Elasticated back
- Sewn-in creases
- Industrially launderable
- Inside leg: 82cm (32ins) unhemmed
- Sizes: 8 - 26



White Black



NF965
Black

NF976
White

Cropped Trouser NF976

- 195gsm 67% Polyester/33% Cotton
- Contemporary cut
- Flat front, ³/₄ cropped wide leg shape
- Zip front with hook & eye fastening
- Side vents
- 60° wash
- Inside leg: 61cm (24ins) hemmed
- Sizes: 8 - 26

Colours: Black / White

Bootleg Trouser NF965U

- 195gsm 67% Polyester/33% Cotton
- Contemporary cut
- Flat front
- Zip front with button fastening
- Free Wonderweb pack
- 60° wash
- Inside leg: 86cm (34ins) unhemmed
- Sizes: 8 - 26

Colours: Black / White / Grey

For full colour ranges for W40 and W640 see pages 163 - 164

Order online at www.alexandra.co.uk call 0845 155 2288 or fax 0845 155 2211